

CEILING SPEAKER

CMS5/T-FDS



DESCRIPTION:

The CMS5/T-FDS is a 6W 100V flush mount ceiling loudspeaker, which has a 5" (130mm) full-range chassis providing excellent sound quality with speech and background music, and which is certified to EN54-24. The speaker is fitted with a 100V transformer which has three power adjustment tapings of 6W, 3W, and 1.5W.

The CMS5/T-FDS has a powder coated metal chassis and grille, with the powder coated finish giving good long-term protection and resistance to corrosion. The speaker is supplied with a rear fire dome, and its enclosure is ingress protection rated to IP21C. As standard the speaker is coloured to match RAL9010 'Pure White', however the speakers can be supplied in any four-digit RAL or NCS colour, as a special order.

Quick and easy ceiling mounting is provided through the use of spring clamps, with a possible ceiling thickness of between 2mm and 45mm. The 100V loudspeaker line cabling is connected by means of a two-pin ceramic block, and for additional reliability a thermal fuse is provided and the speaker chassis is damp-resistant.

Please note that although very thin ceilings can be used as a mounting surface, it should be ensured that the ceiling thickness and strength are appropriate to the weight of the speaker, and to the thickness and weight of the 100V line cable. This loudspeaker is optionally available with a DC blocking capacitor fitted, in order to provide compatibility with DC loudspeaker line monitoring systems. EASE data is available for this speaker on request.

FEATURES:

- 6w 100v Loudspeaker
- Size 5" (130mm)
- Quick Mount
- Shock-resistant Housing
- High Efficiency
- Excellent Sound Quality
- Fully Certified To En54-24

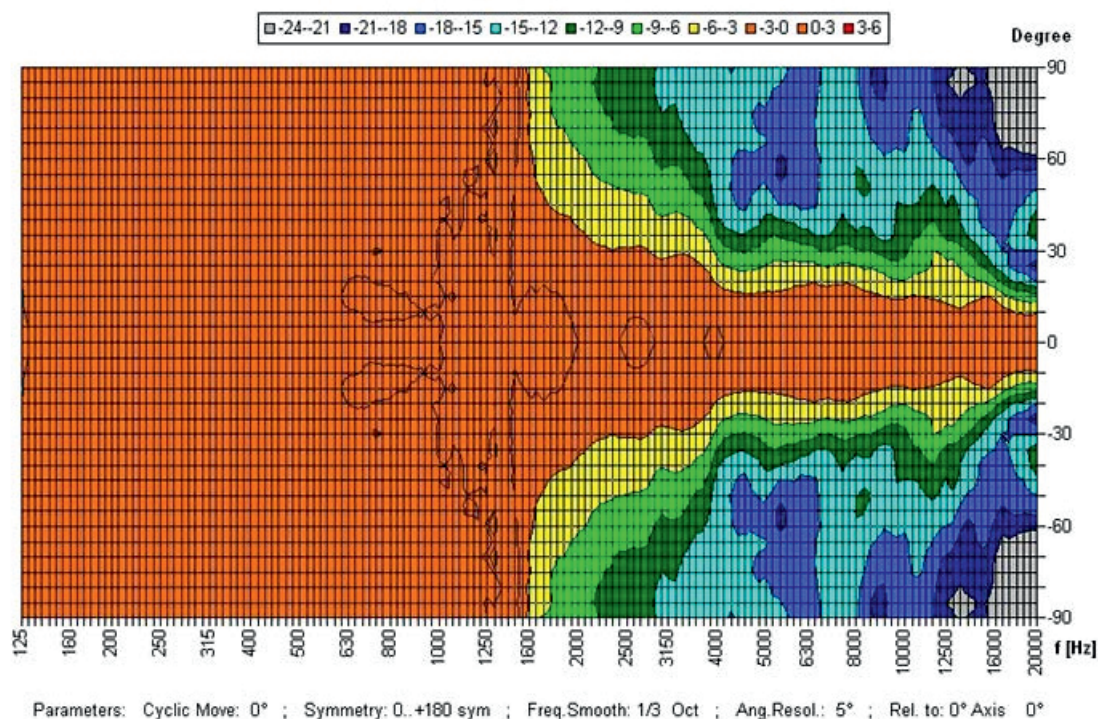
CEILING SPEAKER

SPECIFICATION:

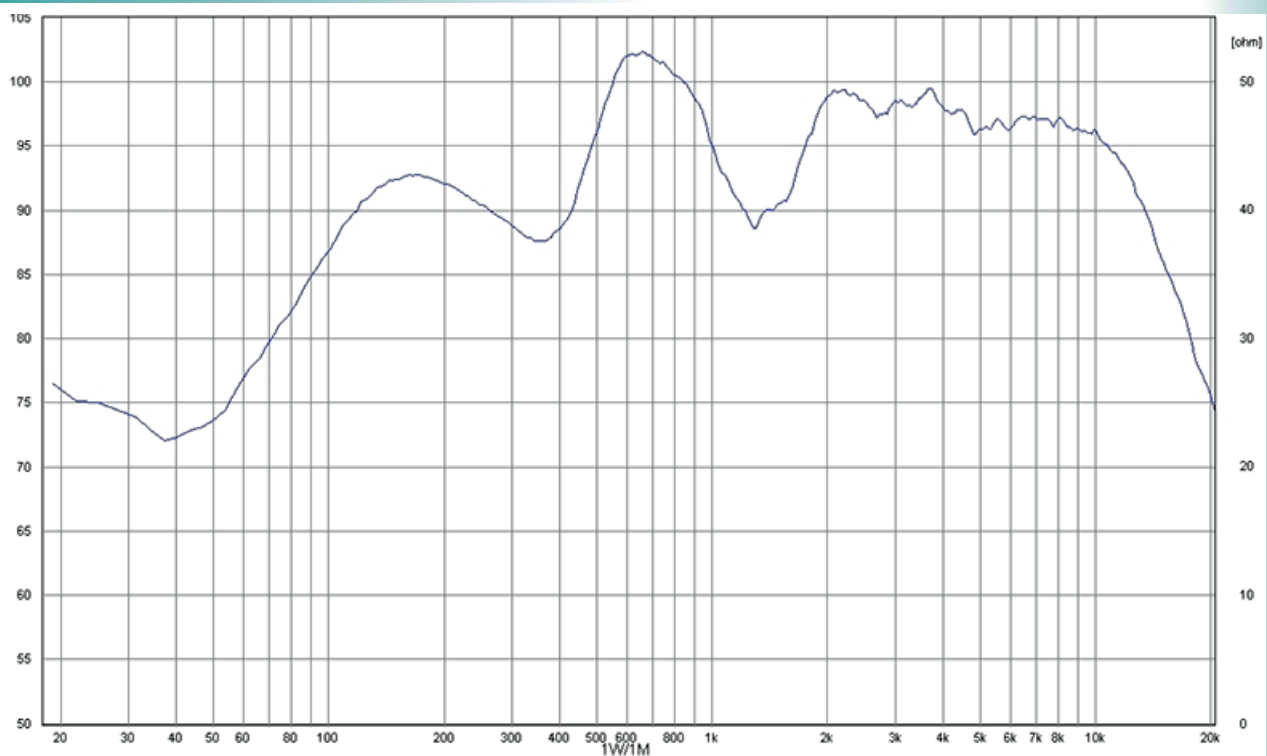
Model	CMS5/T-FDS
Power Tappings	6W / 3W / 1.5W
Frequency Response	350 – 13,800 Hz
SPL 1W / 1m, peak	98.4 dB
SPL 1W / 4m, peak	86.4 dB
SPL Pmax / 4m, peak	94.1 dB
Sensitivity EN54-24, 1W / 4m	77.0 dB
Dispersion (-6dB, 500Hz)	180°
Dispersion (-6dB, 1KHz)	180°
Dispersion (-6dB, 2KHz)	132°
Dispersion (-6dB, 4KHz)	55°
Temperature Range	-20 / +80 °C
Dimensions	180x106 mm
Weight (net)	1.30kg
Colour	RAL 9010 'Pure White'
Connector	2-pin ceramic block
Mounting	Quick-fit mounting
Ceiling Cut-out	167 mm
Maximum cable cross section	8mm ²
Maximum cable cross section loop	2 x 2mm ²
IP Rating	Ip21

CEILING SPEAKER

POLAR DIAGRAM:

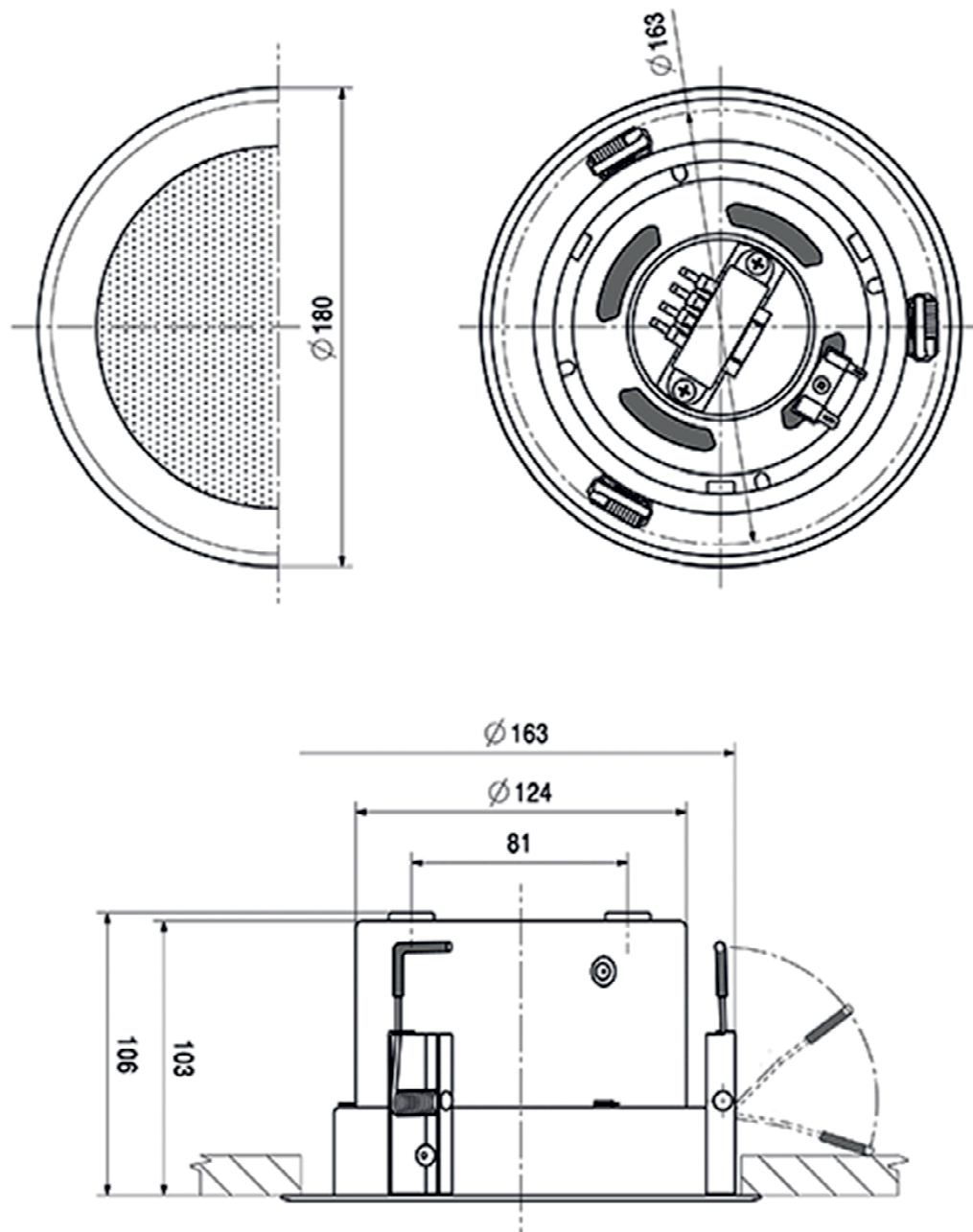


FREQUENCY RESPONSE DIAGRAM:



CEILING SPEAKER

DIMENSIONAL DIAGRAM:



Disclaimer: As per our company policy one of the constant product improvements the right is there for reserved to modify the product specification without prior notice and the picture shown in the datasheet is a design base, the actual picture may vary.