

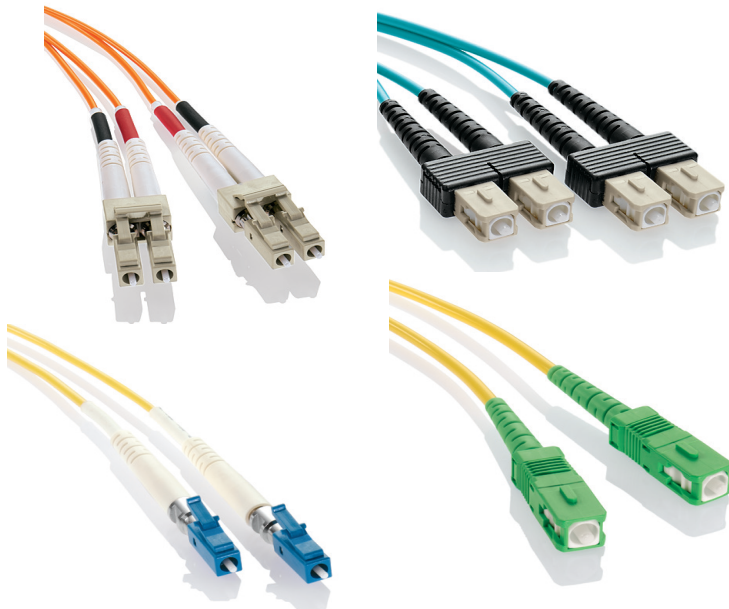
FIBER PATCH CORD SPECIFICATIONS

PCLC-01,02,03,04,05,06,07,-----20

APPLICATION

Fiber Optic Patch Cords are designed to interconnect or cross connect fiber networks within structured cabling systems. Typical fiber connector interfaces are SC, ST, and LC in either multimode or single-mode applications.

PCLC-03



SPECIFICATIONS

The patch cords shall meet an optical return loss equal to or better than -25dB per mated pair for PC polish, equal to or better than -55dB for UPC polish, or -65dB for APC polish. Insertion loss shall not exceed .4dB per mated pair for both multimode and single-mode. The patch cords shall be available in 1, 2, 3, 5, and 10 meter lengths. The patch cords shall be compliant with TIA-568-C.3.

DESIGN CONSIDERATIONS

- Offered in SC, ST, FC, LC, MU, MT-RJ or hybrid options
- Offered in OFNR (riser) and OFNP (plenum) cable jacket
- All connectors have precision pre-radiused zirconia ferrules
- ST and FC connectors have metal bodies
- Corning glass fiber is standard for single-mode
- Standard and custom configurations available
- Duplex clips included with duplex configurations
- OM4 fiber type offered as a custom configuration

PHYSICAL SPECIFICATION

Length: 1, 2, 3, 5, and 10 meters (custom length available)

Dimensions: LC, MU, and MT-RJ built on 1.6-2.0 mm cable SC, ST, and FC built on 3.0 mm cable LC uniboot built on 3.0 mm round cable

Cable Type & Color

OM1 & OM2: Simplex or duplex zip cord multimode cable. Standard 50/125 μm and 62.5/125 μm orange jacket cable.

OM3 & OM4: 50/125 μm Laser Optimized duplex zip cord multimode cable (aqua jacket)*

OS1: Simplex or duplex zip cord single-mode cable (yellow jacket) in UPC or APC polish-style connectors

Insertion Loss

OM1, OM2, OM3, OM4: <0.4 dB maximum loss.

OS1 <0.3 dB maximum loss.

Return Loss

OM1, OM2, OM3, OM4: <0.4 dB maximum loss.

OS1 <0.3 dB maximum loss.