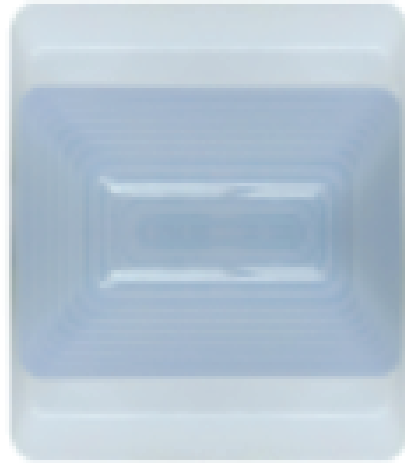


NH-DI3



DESCRIPTION:

Ominicare Brand under HEINRICHH The national standard 86 box design size, wall-mounted installation outside the door of the ward, convenient for medical personnel in the corridor to observe.

FEATURES:

- Three colors to distinguish between patient general call, advanced call, special care call, infusion alarm, toilet call, and access care status.
- When the ordinary call, the door light outside the ward is shining red.
- When the advanced call, the door light outside the ward is blue.
- When the special care call, the door light outside the ward is shining green.
- When the infusion alarm occurs, the door lights outside the ward are alternately red and blue.
- When the bathroom alarms, the door lights outside the ward are alternately red and green.
- When the "Enter Care" button of the ward door machine is pressed, the door light outside the ward is always bright blue.
- When the bed is released, the nurse station cancels the call, and the bathroom is released, the door light outside the ward is extinguished

Specifications:

Model	NH-DI3
Working voltage	12V=24V
Maximum power consumption	0.45W
Control method	Level Control
Working temperature	-20 ° C ~ +80 ° C
Operating humidity	10% to 90%
Size	86*86mm*32MM