

# H10 High End 10" Professional Loudspeaker

H10



## DESCRIPTION:

H10 is an extremely compact Professional Audio and Monitor Loudspeaker in an enclosed cabinet with reliable 2-way technology for professional user. A linear frequency and phase response and very little distortion. Even at high sound pressure levels are the distinguishing marks of the H8. The product not only exhibits excellent speech intelligibility but also a natural broad band music rendition. Although it presently is the most powerful speaker in this compact class it still goes without electrical assistance by controller technology wherever small dimensions, high -quality sound and highest performance is needed the H10 defines state of the art technology it easily outdoes some active and controller operated speakers of the same class at the most important features Only high-class components are being used as for example the especially powerful 10" driver with long cone displacement and aluminum voice coil in neodymium technology, which exhibits a linear membrane displacement and highest efficiency. The 2-way bass reflex construction together with the runtime-corrected and exactly aligned transducer assembly result in an exact signal reproduction. Protective electronic circuits allow for highest operational safety and performance momentary peaks up to 1000watt (AES peak) do not pose a problem for the little H10

The rugged water-based texture finish and the professional configuration make the optimal sound tool. The practically applicable nominal impedance of 12ohms allows for the operation of up to speaker together with any professional amplifier

## FEATURES:

- Using 1 piece of 10" woofer unit and 1 piece of 1.4 "circular polyethylene diaphragm compression treble unit.
- The box body is made of 15 mm plywood quality, with light, wear-resisting spray paint processing, attached with dust-proof net cotton outside.
- The precise design of frequency divider can optimize vocal part of the intermediate expression.
- Multiple screw hole for hoist, with a diameter of 35 mm column pole socket, and a variety of installation methods.

## SCOPE OF APPLICATION:

Used together with H10 professional power amplifier and the former effect processor systems, it is formed a set of perfect sound and vocal performance outstanding high-end entertainment Venue, theaters, Auditoriums

TV, Broadcast

Conference rooms, Class rooms

**HEINRICH**

**HEINRICH LIMITED,** 71-75 SHELTON STREET COVENT GARDEN LONDON  
T: +442032860291 W: [www.heinrichlimited.com](http://www.heinrichlimited.com) E: [info@heinrichlimited.com](mailto:info@heinrichlimited.com)

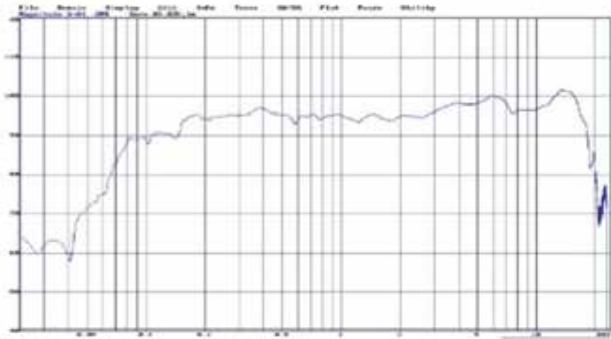
# H10 High End 10" Professional Loudspeaker

## SPECIFICATIONS:

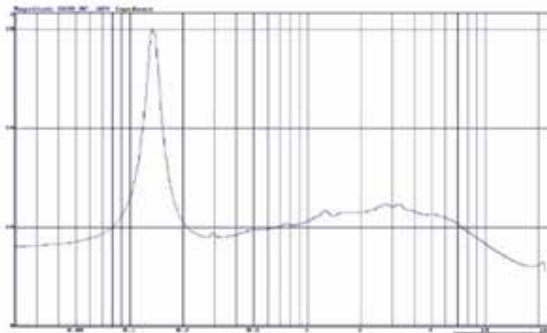
Model	H10
Impedance	8Ω
Frequency Response	40Hz~20KHz
Rated Power	400W/800W Program
Sensitivity	98dB/1W/1M
Sound pressure level Peak	130dB
Cover Range	(H)80° (V)60°
Designed	2-way bass reflex
Treble	1.4"Compressed treble unit x 1
Bass	10" x 1 Bass
Dimension	510 x 325 x 300 mm
Weight	15.2Kg

# H10 High End 10" Professional Loudspeaker

## MEASURING DATA:

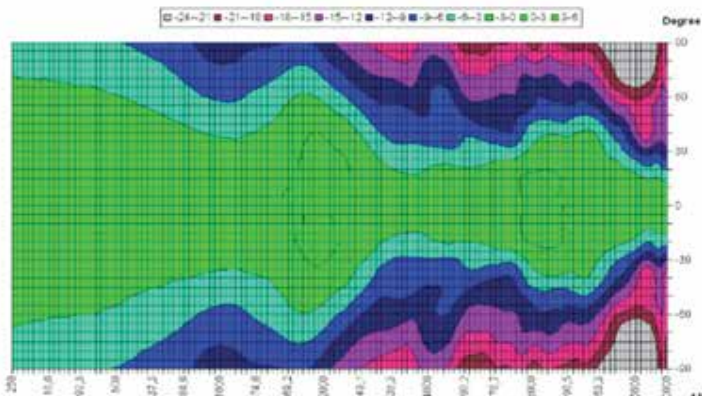


Frequency response



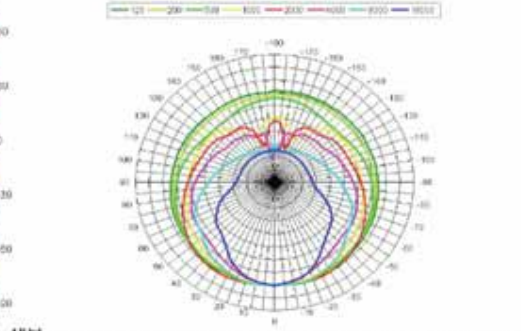
Impedance

### Horizontal isobars of: H10



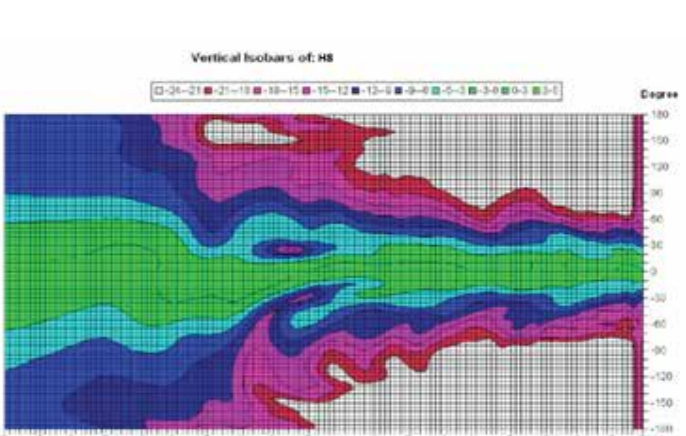
Parameters: Cyclic Move: 0° Symmetry: no symmetry Pres Smooth: 120 Oct Ang Read: 5° Rel. to: 0° Axis: 0°

### Horizontal Polars of: H10



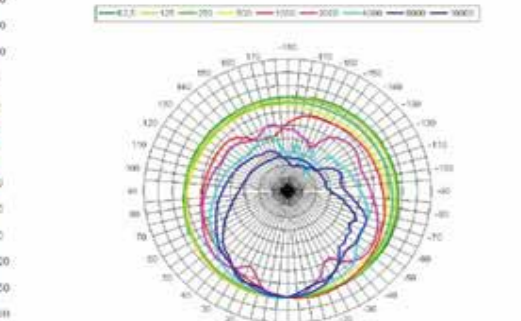
0: Move: 0° Symmetry: no symmetry Pres Smooth: 120 Oct Ang Read: 5° Rel. to: 0° Axis: 0°

### Vertical isobars of: H10



Parameters: Cyclic Move: 0° Symmetry: no symmetry Pres Smooth: 120 Oct Ang Read: 5° Rel. to: 0° Axis: 0°

### Vertical Polars of: H10



0: Move: 0° Symmetry: no symmetry Pres Smooth: 120 Oct Ang Read: 5° Rel. to: 0° Axis: 0°