

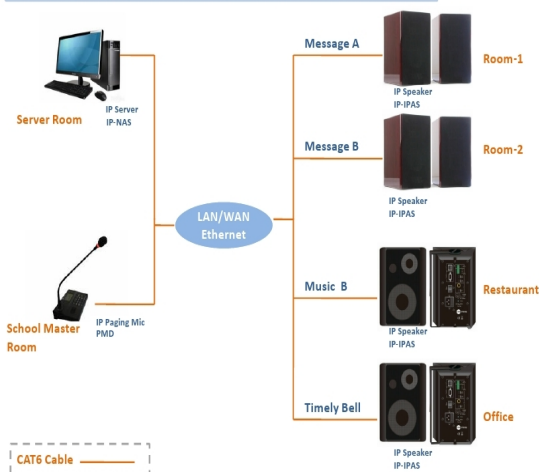
IP Network Audio System Software IP-NAS

Server of IP network audio system and IP PA system. Support Windows 2000, Windows 2007, Windows 7. All display in English. Built-in system set up, system monitor, media player, program timer, system memory functions. Cloud broadcast Mp3 file online, scheduled and matrix at pre-set time to designated loudspeaker zones. Each equipment's working status could be monitored and displayed on this software. Flexible multiple level loudspeaker zone definitions, end-user can define loudspeakers into as many as possible zones at the same time. Built-in weekly timer could broadcast pre-recorded voice message, bell, song to selected zones by trigger contact or manually operation.

The head equipment to encode analog sources into digital source to be transferred over network. Support max 5 different sound cards for simultaneously sources collection. One software packet include administrator and branch server and alarm server. Graphic maps display for visually simple monitoring and operation.



Economy IP PA System for School Sound System Solution



CONFIGURATION & OPERATION

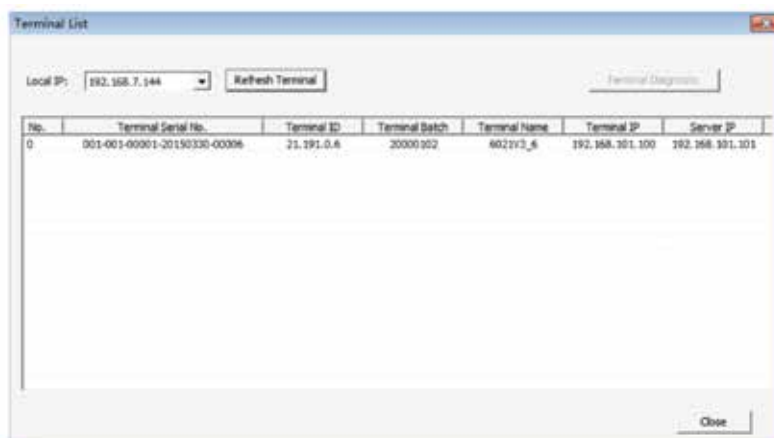
4.1 Software Configuration

After configuration by the terminal configuration tool, the IP POE ceiling speaker will be able to broadcast pre-recorded voice message, live announcement, scheduled program and priority-based multiple streaming.

1) Connect the IP POE ceiling speaker IP-IPS8 POE with the PC within a local LAN or directly connect the IP POE ceiling speaker IP-IPS8 POE to the PC for each one speaker new IP address write in and configuration.

2) Click the "Start" - "All program" - "IP Network Audio System" - "Tool" - "Terminal Configure Tool", This software will be used to write in new IP address as below.

3) Selection of the third option "Network Target Device ID" and click on the "Search" to enter the "Terminal List" Window to have multiple POE ceiling speakers write in new IP simultaneously.



As per our company policy one of the constant Product improvement the right is there for reserved to modify product specifications without prior notice

IP/TCP Network Audio System IP-NAS Software Series

4) Click the "Refresh Terminal" to get all online terminal list, double click on the terminal to get into each terminal configuration window. There are two ways to write in the new IP address to this POE speaker.

a) DHCP or Automatic Allocation IP Address: Enable to automatically write in IP address to multiple POE speakers. As below picture one.

b) Manual Allocation IP Address: Enable to manually write in IP address to single POE speakers of fixed IP address. As below picture two.

Successful write in IP address will come with two reminding: Visual status indicators of the LAN input flashing, reminding words of "Success Write In", another way is to check the online status displayed IP address from the software.

4.2 Broadcast Voice Message and Mp3 Music

Real Time Broadcast: Broadcast the external music sources or announcement through the PC sound card, which will be decoded to online streaming to each POE speaker. Open the media player built-in the software, select the input sources or microphones, then choose the ID of the targeted POE speaker or IP terminal to broadcast. Max 4 different external sources through PC sound card decoding streaming is possible.

Real Time File Broadcast: Broadcast the music Mp3 files or Mp3 pre-recorded voice messages directly from the server PC, which also will be decoded to online streaming to each POE speaker. Add the Mp3 voice message or add one Mp3 file to be broadcasted through online streaming,

As per our company policy one of the constant Product improvement the right is there for reserved to modify product specifications without prior notice

4.3 Paging & Life Announcement

Life announcement and pre-recorded voice message broadcast is available when the POE speaker works together with the IP remote paging microphone IP-500RM, the paging will enable to be broadcasted to individual POE speaker, grouped POE speakers and all speakers. While different levels paging

- priority will be pre-set in the server management software.
- Set up the POE ceiling speaker paging ID No.
- Possible to allocate several POE ceiling speakers into one group paging ID No.
- Possible to allocate same POE ceiling speaker into several group paging ID No.
- Paging will be possible once the POE ceiling speaker is idle or from higher level priority.
- Use the IP remote paging microphone IP-600RM to input the ID No. of the targeted terminal or group terminals.
- There will come with ring bell before connection, speech and paging will be accessible after connection reminding.

4.3 Contact Input and Contact Output

Emergency Intercom System: There is one Emergency Call Button input to connect with one external emergency button, by pressing the button, the remote call station IP-600RM will be reminded by its ID or pre-set room number with ring bell. The remote call station IP-500RM enable to make announcement to this room by answer this call. There is emergency light output once the emergency button is pressed.

Third Party System Inter-work: The contact input and contact output make it is possible to inter-work with third party system like passenger announcement system, CCTV surveillance system, door access system, parking system, AMX/EXTRON/CRESTON central control system and lighting system. It is 0V non-voltage short circuit closed contact input and open contact output, by this way, it is very easy to compatible with any third-party system communication by easy control input.

TROUBLE SHOOT AND MAINTENANCE

Please follow the below guidance to do self-help trouble shoot services in case of system malfunction. Please contact your local authorized distributor for technical support or ask help from the manufacturer through mail to info@heinrichlimited.com

5.1 Network Status Indicator Fast Flashing or No Light On

- Make sure the CAT5 or CAT6 cable is straight by replace with another well-done cable.
- Check the crystal head connection whether losing by replace with another well-done cable.
- Make sure your target speaker ID is well configured by check its online status is ok?
- Ping the IP is well communicated: Start menu to ping the IP. Ping + space + IP address, if not connected, please check again the POE speaker IP address configuration step by step.
- Replace with another POE speaker to see whether it is network problem or the speaker its self-problem.
- Make sure to close the firewall before installation the server software, otherwise, the software is incomplete installed.
- Make sure the system server software is run by the administrator, otherwise, the software is incomplete installed.

5.2 No Sound Output after Broadcast

- Non-supportable Mp3 format, please check the Mp3 format whether is supportable through the Mp3 Analyse Tool.
- Incomplete software installation because of firewall and not run by administrator.
- Refresh service must be done after any setting or configuration.
- Make sure the POE speaker is in same bandwidth with the LAN Network.

As per our company policy one of the constant Product improvement the right is there for reserved to modify product specifications without prior notice

IP/TCP Network Audio System IP-NAS Software Series

Make sure all POE speakers are well-written in new IP address, if use DHCP automatic allocation IP address to multiple POE speaker of same default IP address, this is wrong way, since the software is impossible to distinguish each other, so it will have caused only one POE speaker new IP address write in.

Increase the POE speaker output volume, its default one is 56, ensure it is in comfortable output level.
Check the software whether is registered with license code.

5.2 Sound Output Discontinuous

- Make sure the POE speaker is in same bandwidth with the LAN Network.
- Make sure all POE speakers are well-written in new IP address, if use DHCP automatic allocation IP address to multiple POE speaker of same default IP address, this is wrong way, since the software is impossible to distinguish each other, so it will have caused only one POE speaker new IP address write in. Check the network transmission is well. Ping the IP is well communicated: Start menu to ping the IP. Ping + space + IP address, if not connected, please check again the POE speaker IP address configuration step by step.
- Make sure the communication distance is within 100 meters.
- Replace with another POE speaker to see whether it is network problem or the speaker its self-problem.
- Non-supportable Mp3 format, please check the Mp3 format whether is supportable through the Mp3 Analyse Tool.