

# H15 High End 15" Professional Loudspeaker

## H15



### DESCRIPTION:

H15 is an compact Professional Audio and 2-way Loudspeaker which was developed to be permanently installed for sound reinforcement in halls, theaters, concert venues and auditoriums. This speaker was designed to be a powerful tool in the hands of a discerning operator. The excellent transmission capacity, wide coverage of speech and music and the attractive design make this speaker the numbers one choice for the professional user.

The lowly tuned bass reflex design allows for a voluminous and power rendition. The powerful 1.4" neodyme driver reproduces the upper range precisely and silky very low bass frequencies are being reproduced without deranging ambient noise enclosed cabinet with reliable 2-way technology for professional user. A liner frequency and phase response and very low distortion. Even at high sound pressure levels are the distinguishing marks of the H8. The product not only exhibits excellent speech intelligibility but also a natural broad band music rendition. Although it presently is the most powerful speaker in this compact class it still goes without electronic assistance by controller technology wherever small dimensions, high -quality sound and highest performance is needed the H15 defines state of the art technology it easily outdoes some active and controller operated speakers of the same class at the most important features.

Only high-class components are being used as for example the especially powerful 15" driver with long cone displacement and aluminum voice coil in neodyme technology, which exhibits a linear membrane displacement and highest efficiency. The 2-way bass reflex construction together with the runtime-corrected and exactly aligned transducer assembly result in an exact signal reproduction. Protective electronic circuits allow for highest operational safety and performance momentary peaks up to 1.4KW (AES peak) do not pose a problem for the H15.

The rugged water-based texture finish and the professional configuration make the optimal sound tool. The practically applicable nominal impedance of 12ohms allows for the operation of up to speaker together with any professional amplifier this model have IP56 for outdoor application and horizontal and vertical can be used

### FEATURES:

- Using 1 pieces of 15" mid-bass driver and 1 piece of 2.95" Circular polyethylene diaphragm compression driver.
- Box is made of 15mm plywood, light quality, with wear resistant paint processing, and paste Anti-dust mesh cotton outside.
- The exact design of frequency divider is able to perfect power response and good performance of vocal part.
- A plurality of screw lifting holes, one pole sockets whose diameter is 35mm, a variety of installation methods

As per our company policy one of the constant Product Improvement the right is there for reserved to modify product specifications without prior notice.

# HEINRICH

**HEINRICH LIMITED**, 69 Athlone Road London SW22DU  
W: [www.heinrichlimited.com](http://www.heinrichlimited.com) E: [info@heinrichlimited.com](mailto:info@heinrichlimited.com)

# H15 High End 15" Professional Loudspeaker

## SCOPE OF APPLICATION:

Used together with H15 professional Loudspeaker and the former effect processor systems, it is formed a set of perfect sound and vocal performance outstanding high-end entertainment

Venue, theaters, Auditoriums

TV, Broadcast, live shows

Conference rooms, Class rooms, Bar

## SPECIFICATIONS:

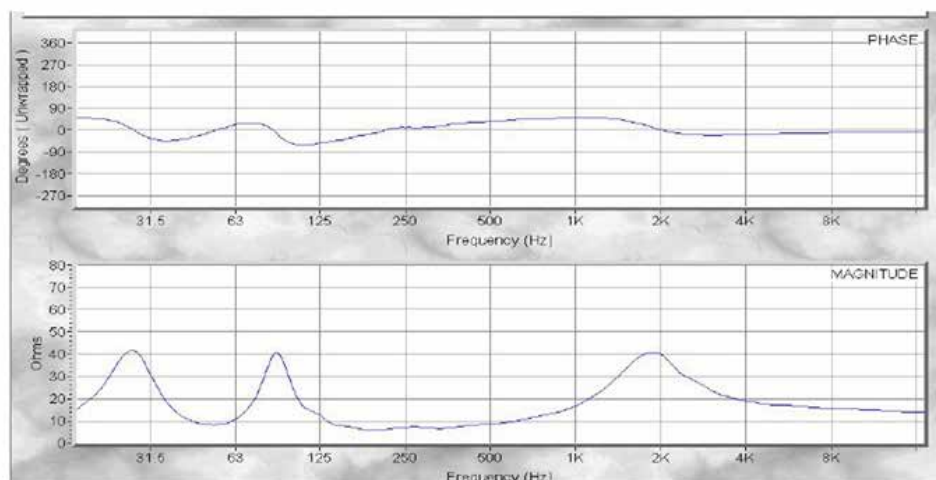
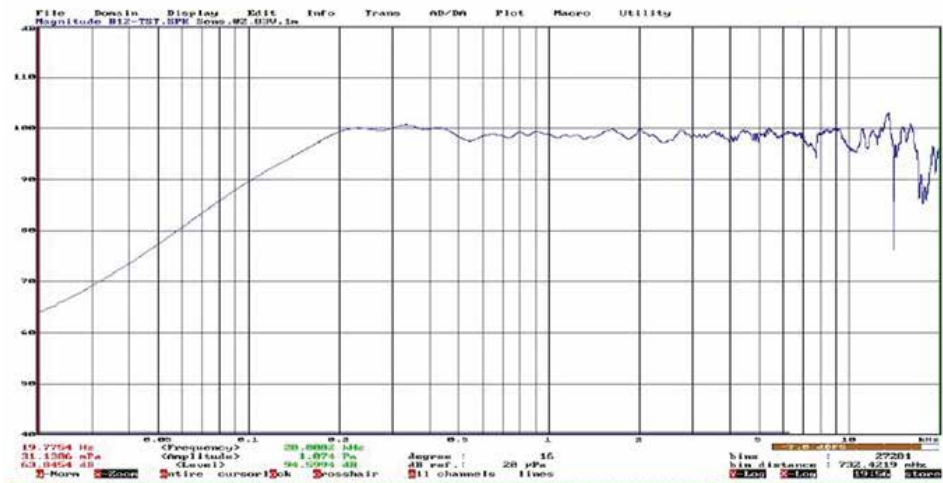
Model	H15
Impedance	8Ω
Frequency Response	40Hz~20KHz
Rated Power	500W/1.5KW program
Sensitivity	105dB/1W/1M
Sound Pressure Level SPL	135dB (Peak)
Cover Range	(H)80°(V)60°
Treble	2.95"Compressed treble unit x 1
Bass	15" x 1 Bass
Dimension	660 x 435 x 430 mm
Weight	25.8Kg

As per our company policy one of the constant Product Improvement the right is there for reserved to modify product specifications without prior notice.

As per our company policy one of the constant Product Improvement the right is there for reserved to modify product specifications without prior notice.

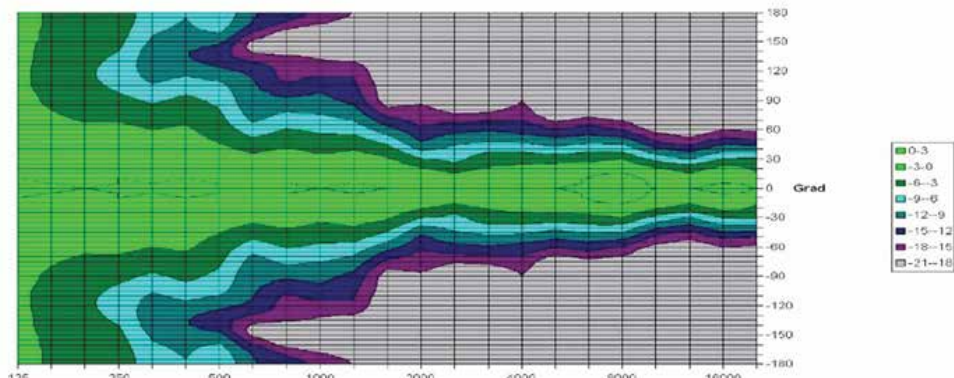
# H15 High End 15" Professional Loudspeaker

## MEASURING DATA:



Bodeplot: Impedance and phase

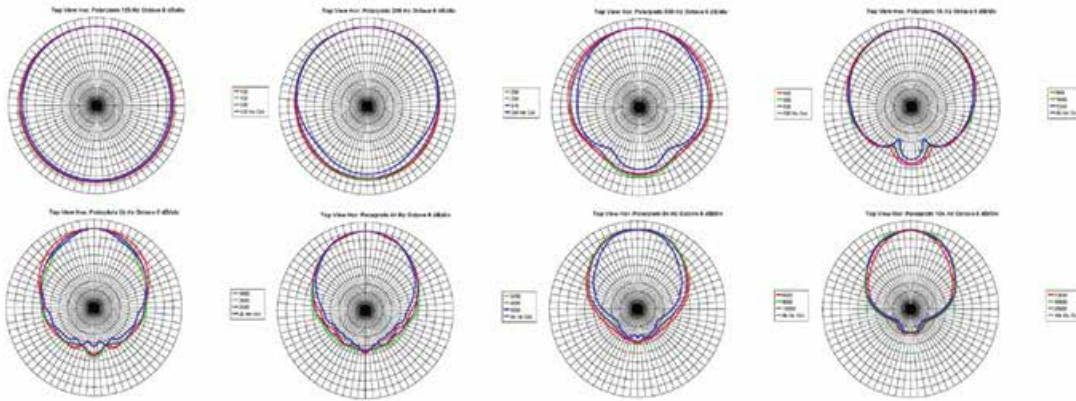
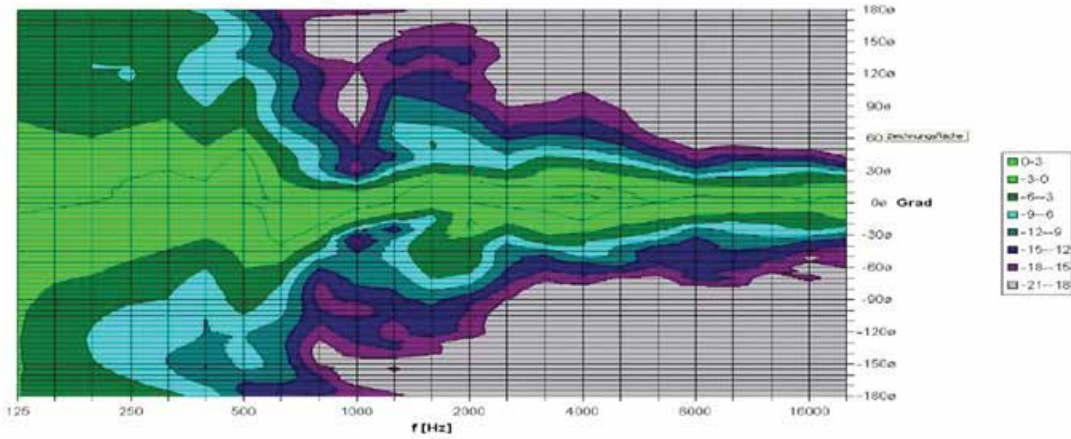
H 12 hor. Directivity Plot



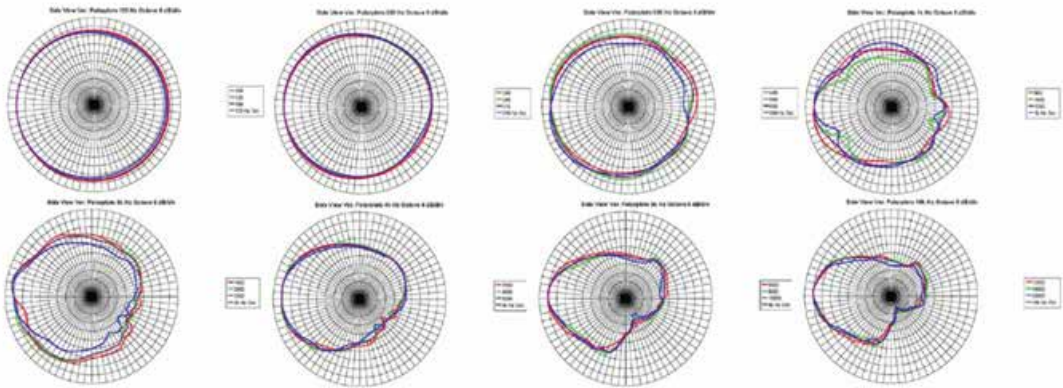
As per our company policy one of the constant Product improvement the right is there reserved to modify product specifications without prior notice.

# H15 High End 15" Professional Loudspeaker

H12 ver. Directivity Plot



Polar patterns: Horizontal dispersion in 3<sup>rd</sup> octave steps



Polar patterns: Vertical dispersion in 3<sup>rd</sup> octave steps

As per our company policy one of the constant Product Improvement the right is there reserved to modify product specifications without prior notice.